

TRIAGE GROUP SUPERVISOR

Multi-Casualty Incident

Reports To: IC or Medical Branch Director, if established

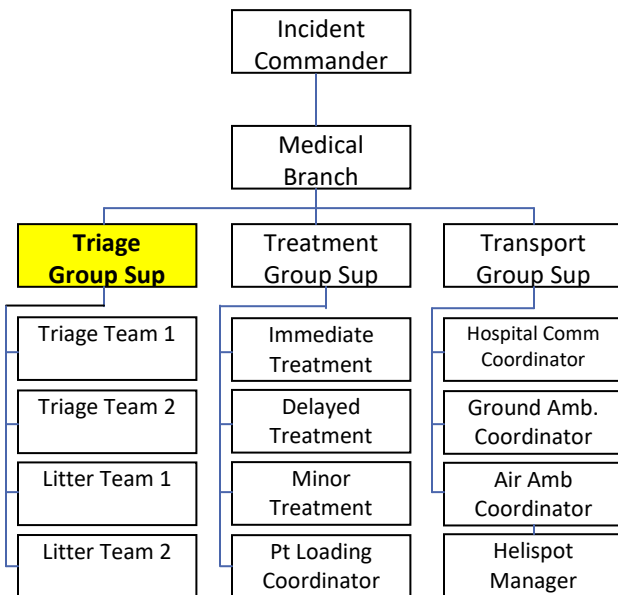
Radio Identifier: Triage Group

Responsibilities: Locate and triage all patients, track number of patients by category, and move each patient to the appropriate treatment area.

- Don position identification vest
- Evaluate and request resources
- Appoint and brief staff
- Issue triage belt kits
- Implement triage process
- Ensure critical medical care is provided
- Ensure each patient has a triage ribbon attached before moving to treatment
- Coordinate movement of patients from location found to treatment
- Ensure adequate patient decontamination
- Maintain triage group worksheet
- Provide status reports to the designated supervisor
- Release personnel back to the designated supervisor when no longer needed

IMMEDIATE PRIORITIES

- Size-Up
- Account for all patients
- Issue triage kits
- Implement triage process
- Report number/category of pts
- Move patients to treatment area



Worksheet

Location 1		West Parking Lot	
Count from Triage Teams			Total
ADULT			
1	5/1/5	IMMEDIATE	11
PED			
1	2/1	IMMEDIATE	3
2	6/7/1	DELAYED	14
3	8/9/6	MINOR	23
0	2	MORGUE	2
PT Total			53

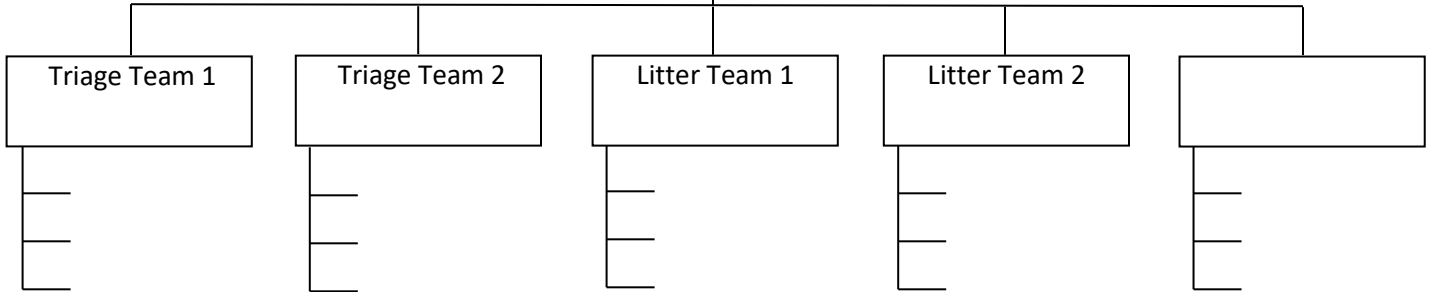
TRIAGE GROUP WORKSHEET

Multi-Casualty Incident

Frequency List	
Command:	
Triage/Treatment Grp:	
Transportation Grp:	

Triage Group Sup

Initial Size-Up	
IMMEDIATE	
DELAYED	
MINOR	



Location 1		
Count from Triage Teams		Total
ADULT	IMMEDIATE	
1		
PED	IMMEDIATE	
1		
2	DELAYED	
3	MINOR	
0	MORGUE	
PT Total		

Location 2		
Count from Triage Teams		Total
ADULT	IMMEDIATE	
1		
PED	IMMEDIATE	
1		
2	DELAYED	
3	MINOR	
0	MORGUE	
PT Total		

Notes: