

# HOSPITAL COMMUNICATION COORDINATOR

## Multi-Casualty Incident

**Reports To:** Transportation Group Supervisor

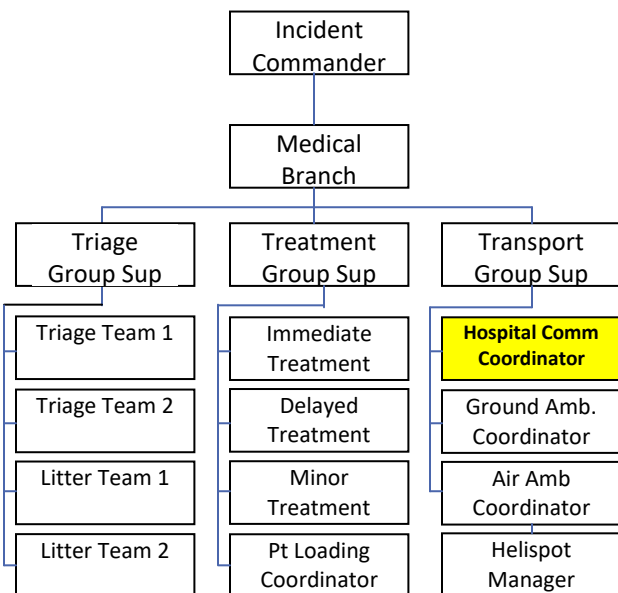
**Radio Identifier:** Hospital Communications

**Responsibilities:** Establish communication with all hospitals in Utah & S.L. County, provide incident information, and maintain status of available hospital beds.

- Establish communications with all hospitals in Utah County and Salt Lake County
  - Provide pertinent incident information and periodic updates
  - Obtain availability and bed count, by category
- Receive basic patient information and patient counts from Treatment Managers
- Coordinate patient destination with ambulance coordinators and hospitals
- Maintain Hospital Bed Availability Worksheet
- Provide status reports to the transportation group supervisor

**IMMEDIATE PRIORITIES**

- Establish communications with hospitals
- Provide basic incident information to hospitals
- Obtain & track available bed count from hospitals
- Coordinate patient destination



### Worksheet

HOSPITAL BED AVAILABILITY WORKSHEET													
Multi-Casualty Incident													
Frequency List		Patient Count Reports											
Command:		IMMEDIATE	Initial	1st	2nd	3rd	4th						
Triage/Treatment Grp:		DELAYED											
Transportation Grp:		MINOR											
Air Operations:													
Mountain Point Hospital		Available	Beds Used										Total
IMMEDIATE			1	2	3	4	5	6	7	8	9	10	
			11	12	13	14	15	16	17	18	19	20	
	DELAYED		1	2	3	4	5	6	7	8	9	10	
	MINOR		11	12	13	14	15	16	17	18	19	20	
			1	2	3	4	5	6	7	8	9	10	
			11	12	13	14	15	16	17	18	19	20	
American Fork Hospital		Available	Beds Used										Total
IMMEDIATE			1	2	3	4	5	6	7	8	9	10	
			11	12	13	14	15	16	17	18	19	20	
	DELAYED		1	2	3	4	5	6	7	8	9	10	
	MINOR		11	12	13	14	15	16	17	18	19	20	
			1	2	3	4	5	6	7	8	9	10	
			11	12	13	14	15	16	17	18	19	20	
Timpanogos Hospital		Available	Beds Used										Total
IMMEDIATE			1	2	3	4	5	6	7	8	9	10	
			11	12	13	14	15	16	17	18	19	20	
	DELAYED		1	2	3	4	5	6	7	8	9	10	
	MINOR		11	12	13	14	15	16	17	18	19	20	
			1	2	3	4	5	6	7	8	9	10	
			11	12	13	14	15	16	17	18	19	20	

Notes:

# HOSPITAL BED AVAILABILITY WORKSHEET

## Multi-Casualty Incident

Frequency List	
Command:	
Triage/Treatment Grp:	
Transportation Grp:	
Air Operations:	

Patient Count Reports					
	Initial	1st	2nd	3rd	4th
<b>IMMEDIATE</b>					
<b>DELAYED</b>					
<b>MINOR</b>					

Mountain Point Hospital		Available	Beds Used										Total
	<b>IMMEDIATE</b>		1	2	3	4	5	6	7	8	9	10	
			11	12	13	14	15	16	17	18	19	20	
	<b>DELAYED</b>		1	2	3	4	5	6	7	8	9	10	
			11	12	13	14	15	16	17	18	19	20	
	<b>MINOR</b>		1	2	3	4	5	6	7	8	9	10	
			11	12	13	14	15	16	17	18	19	20	

American Fork Hospital		Available	Beds Used										Total
	<b>IMMEDIATE</b>		1	2	3	4	5	6	7	8	9	10	
			11	12	13	14	15	16	17	18	19	20	
	<b>DELAYED</b>		1	2	3	4	5	6	7	8	9	10	
			11	12	13	14	15	16	17	18	19	20	
	<b>MINOR</b>		1	2	3	4	5	6	7	8	9	10	
			11	12	13	14	15	16	17	18	19	20	

Timpanogos Regional Hosp		Available	Beds Used										Total
	<b>IMMEDIATE</b>		1	2	3	4	5	6	7	8	9	10	
			11	12	13	14	15	16	17	18	19	20	
	<b>DELAYED</b>		1	2	3	4	5	6	7	8	9	10	
			11	12	13	14	15	16	17	18	19	20	
	<b>MINOR</b>		1	2	3	4	5	6	7	8	9	10	
			11	12	13	14	15	16	17	18	19	20	

Notes:

Orem Community Hospital		Available	Beds Used										Total										
	<b>IMMEDIATE</b>		1	2	3	4	5	6	7	8	9	10	11	12	13	14	15	16	17	18	19	20	
	<b>DELAYED</b>		1	2	3	4	5	6	7	8	9	10	11	12	13	14	15	16	17	18	19	20	
	<b>MINOR</b>		1	2	3	4	5	6	7	8	9	10	11	12	13	14	15	16	17	18	19	20	

Utah Valley Hospital		Available	Beds Used										Total										
	<b>IMMEDIATE</b>		1	2	3	4	5	6	7	8	9	10	11	12	13	14	15	16	17	18	19	20	
	<b>DELAYED</b>		1	2	3	4	5	6	7	8	9	10	11	12	13	14	15	16	17	18	19	20	
	<b>MINOR</b>		1	2	3	4	5	6	7	8	9	10	11	12	13	14	15	16	17	18	19	20	

Mountain View Hospital		Available	Beds Used										Total										
	<b>IMMEDIATE</b>		1	2	3	4	5	6	7	8	9	10	11	12	13	14	15	16	17	18	19	20	
	<b>DELAYED</b>		1	2	3	4	5	6	7	8	9	10	11	12	13	14	15	16	17	18	19	20	
	<b>MINOR</b>		1	2	3	4	5	6	7	8	9	10	11	12	13	14	15	16	17	18	19	20	

IHC, Murray		Available	Beds Used										Total										
	<b>IMMEDIATE</b>		1	2	3	4	5	6	7	8	9	10	11	12	13	14	15	16	17	18	19	20	
	<b>DELAYED</b>		1	2	3	4	5	6	7	8	9	10	11	12	13	14	15	16	17	18	19	20	
	<b>MINOR</b>		1	2	3	4	5	6	7	8	9	10	11	12	13	14	15	16	17	18	19	20	

Notes:

University of Utah, SLC		Available	Beds Used										Total										
	<b>IMMEDIATE</b>		1	2	3	4	5	6	7	8	9	10	11	12	13	14	15	16	17	18	19	20	
	<b>DELAYED</b>		1	2	3	4	5	6	7	8	9	10	11	12	13	14	15	16	17	18	19	20	
	<b>MINOR</b>		1	2	3	4	5	6	7	8	9	10	11	12	13	14	15	16	17	18	19	20	

Primary Children's, SLC		Available	Beds Used										Total										
	<b>IMMEDIATE</b>		1	2	3	4	5	6	7	8	9	10	11	12	13	14	15	16	17	18	19	20	
	<b>DELAYED</b>		1	2	3	4	5	6	7	8	9	10	11	12	13	14	15	16	17	18	19	20	
	<b>MINOR</b>		1	2	3	4	5	6	7	8	9	10	11	12	13	14	15	16	17	18	19	20	

Lone Peak Hospital, Draper		Available	Beds Used										Total										
	<b>IMMEDIATE</b>		1	2	3	4	5	6	7	8	9	10	11	12	13	14	15	16	17	18	19	20	
	<b>DELAYED</b>		1	2	3	4	5	6	7	8	9	10	11	12	13	14	15	16	17	18	19	20	
	<b>MINOR</b>		1	2	3	4	5	6	7	8	9	10	11	12	13	14	15	16	17	18	19	20	

Riverton Hospital		Available	Beds Used										Total										
	<b>IMMEDIATE</b>		1	2	3	4	5	6	7	8	9	10	11	12	13	14	15	16	17	18	19	20	
	<b>DELAYED</b>		1	2	3	4	5	6	7	8	9	10	11	12	13	14	15	16	17	18	19	20	
	<b>MINOR</b>		1	2	3	4	5	6	7	8	9	10	11	12	13	14	15	16	17	18	19	20	

Notes:

University of Utah, SJC		Available	Beds Used										Total										
	<b>IMMEDIATE</b>		1	2	3	4	5	6	7	8	9	10	11	12	13	14	15	16	17	18	19	20	
	<b>DELAYED</b>		1	2	3	4	5	6	7	8	9	10	11	12	13	14	15	16	17	18	19	20	
	<b>MINOR</b>		1	2	3	4	5	6	7	8	9	10	11	12	13	14	15	16	17	18	19	20	

Alta View Hospital, Sandy		Available	Beds Used										Total										
	<b>IMMEDIATE</b>		1	2	3	4	5	6	7	8	9	10	11	12	13	14	15	16	17	18	19	20	
	<b>DELAYED</b>		1	2	3	4	5	6	7	8	9	10	11	12	13	14	15	16	17	18	19	20	
	<b>MINOR</b>		1	2	3	4	5	6	7	8	9	10	11	12	13	14	15	16	17	18	19	20	

Jordan Valley, WJC		Available	Beds Used										Total										
	<b>IMMEDIATE</b>		1	2	3	4	5	6	7	8	9	10	11	12	13	14	15	16	17	18	19	20	
	<b>DELAYED</b>		1	2	3	4	5	6	7	8	9	10	11	12	13	14	15	16	17	18	19	20	
	<b>MINOR</b>		1	2	3	4	5	6	7	8	9	10	11	12	13	14	15	16	17	18	19	20	

Jordan Valley, WVC		Available	Beds Used										Total										
	<b>IMMEDIATE</b>		1	2	3	4	5	6	7	8	9	10	11	12	13	14	15	16	17	18	19	20	
	<b>DELAYED</b>		1	2	3	4	5	6	7	8	9	10	11	12	13	14	15	16	17	18	19	20	
	<b>MINOR</b>		1	2	3	4	5	6	7	8	9	10	11	12	13	14	15	16	17	18	19	20	

Notes:

St Marks Hospital, SLC		Available	Beds Used										Total										
	<b>IMMEDIATE</b>		1	2	3	4	5	6	7	8	9	10	11	12	13	14	15	16	17	18	19	20	
	<b>DELAYED</b>		1	2	3	4	5	6	7	8	9	10	11	12	13	14	15	16	17	18	19	20	
	<b>MINOR</b>		1	2	3	4	5	6	7	8	9	10	11	12	13	14	15	16	17	18	19	20	

Salt Lake Regional, SLC		Available	Beds Used										Total										
	<b>IMMEDIATE</b>		1	2	3	4	5	6	7	8	9	10	11	12	13	14	15	16	17	18	19	20	
	<b>DELAYED</b>		1	2	3	4	5	6	7	8	9	10	11	12	13	14	15	16	17	18	19	20	
	<b>MINOR</b>		1	2	3	4	5	6	7	8	9	10	11	12	13	14	15	16	17	18	19	20	

LDS Hospital, SLC		Available	Beds Used										Total										
	<b>IMMEDIATE</b>		1	2	3	4	5	6	7	8	9	10	11	12	13	14	15	16	17	18	19	20	
	<b>DELAYED</b>		1	2	3	4	5	6	7	8	9	10	11	12	13	14	15	16	17	18	19	20	
	<b>MINOR</b>		1	2	3	4	5	6	7	8	9	10	11	12	13	14	15	16	17	18	19	20	

		Available	Beds Used										Total										
	<b>IMMEDIATE</b>		1	2	3	4	5	6	7	8	9	10	11	12	13	14	15	16	17	18	19	20	
	<b>DELAYED</b>		1	2	3	4	5	6	7	8	9	10	11	12	13	14	15	16	17	18	19	20	
	<b>MINOR</b>		1	2	3	4	5	6	7	8	9	10	11	12	13	14	15	16	17	18	19	20	

Notes: