

# TRANSPORTATION GROUP SUPERVISOR

## Multi-Casualty Incident

**Reports To:** IC or Medical Branch Director, if established

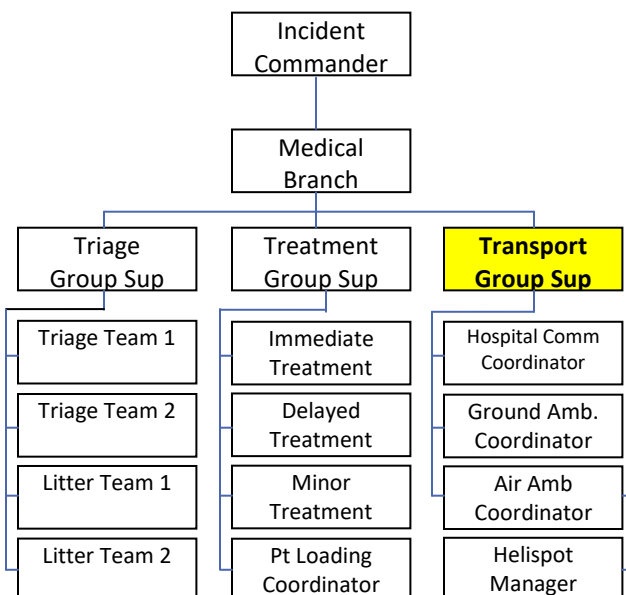
**Radio Identifier:** Transportation Group

**Responsibilities:** Coordinate patient transport to definitive care and maintain records relative to patient identification, condition, and destination.

- Don position identification vest
- Evaluate and request resources
- Assign and brief staff as needed
- Designate ambulance staging/loading area
- Secure ingress & egress for ambulances
  - Notify staging of entry/exit
- Establish helistops & notify the Medical Branch Director of the location
- Establish/maintain communications with hospitals
- Provide for patient transport to definitive care, by ground and air
- Provide for patient transfer from treatment to the helistops
- Ensure patient information and destinations are recorded
- Provide updates to designated supervisor

### IMMEDIATE PRIORITIES

- Size-Up
- Establish comms with hospitals
- Designate amb loading area
- Secure ingress/egress route
- Establish helistops
- Track patient info & destination



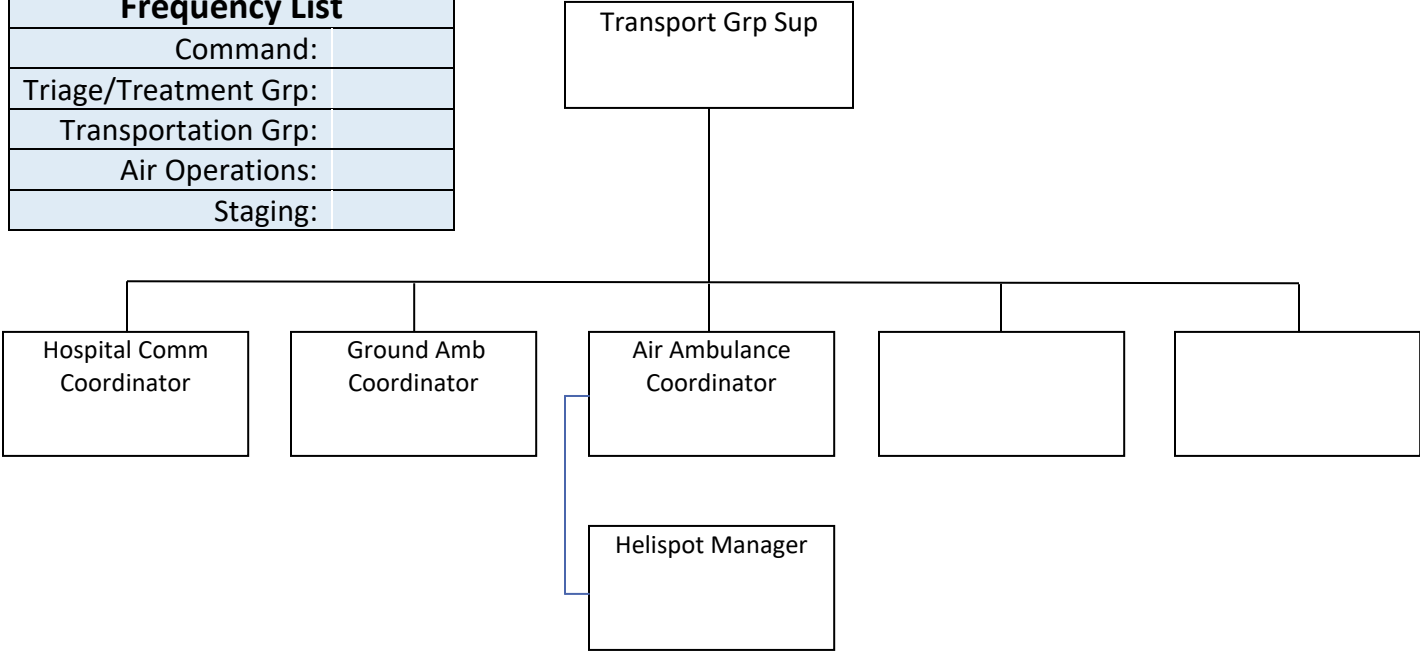
### Worksheet

The screenshot shows a digital form titled "Transportation Receipt Holder". It includes fields for Incident, Recorder Name, Agency, Date, and Time. A barcode is present with the following information: Tag Number 5838, Destination AFH, Via MAJ01, and Time 16:04. The word "AMPUTATION" is written in large letters across the barcode area. The form has multiple sections for "Notes" and "MedCom Advised" with "ETA" fields.

# TRANSPORTATION GROUP WORKSHEET

## Multi-Casualty Incident

Frequency List	
Command:	
Triage/Treatment Grp:	
Transportation Grp:	
Air Operations:	
Staging:	



### PATIENT COUNT UPDATES

	Initial	1st	2nd	3rd	4th	5th	6th	7th
IMMEDIATE								
DELAYED								
MINOR								

Notes